



# AVT234-M<sup>©</sup>KIT

with

## Target Motion Cueing<sup>®</sup> (TMC<sup>®</sup>)

GSA Schedule# GS-35F-0431U

In **REAL** life ..... they need to know the **REAL** threats

- - WE GOT YOUR BACK - -

**RAPIDLY DEPLOYABLE Indicators and Warnings (I&W)  
for Surveillance/Reconnaissance, Observation and Relay Points**

### Target Motion Cueing Kits Part No. AVT-KIT-001

Target Motion Cueing<sup>®</sup> (TMC<sup>®</sup>) provides warnings of enemy movement outside your perimeter. This Indicators and Warnings (I&W) system enhances video surveillance by drawing a sentry's attention to actual enemy movement. By reducing false positive warnings, a sentry is able to more effectively detect and investigate real threats. The visual display clearly and efficiently highlights movement and provides an audible and visual alert. Instead of monitoring a group of monotonous images on a bank of screens, TMC enables the sentry to focus attention only on events of interest.

AVT234-M<sup>©</sup> contains all necessary equipment to set up and provide persistent full motion video analysis of camera views to implement perimeter security at SR, OP, and relay points. Target alerts can be sorted by date, time, camera sensor ID, and GPS coordinates. Alert events are recorded on the AVT234-M<sup>©</sup> for historical reference. Target alerts are immediately heard locally and are clearly displayed to operators to highlight movement areas. They are also transmitted to lethality decision support tools via tactical network topology using email, cell phone, VHF coupler, or tactical radios.



The kit is transported via truck in carry bags and cases, and provides rapid configuration of cameras on vehicles or the two camera tripods provided with each kit.

AVT234-M<sup>©</sup> allows local operators to quickly set up fire base and outpost perimeters that can be monitored locally and sent to situation awareness and lethality decision support tools via tactical network topology using email, cell phone, VHF coupler, or tactical radios.



Target Motion Cueing (TMC) reduces false positive warnings, provides audible alarms when it detects human or vehicle intruders, and provides the sentry with clear visual display that efficiently highlights movement and provides location of motion. TMC enables the sentry to focus attention only on events of interest while maintaining heads up mission posture.

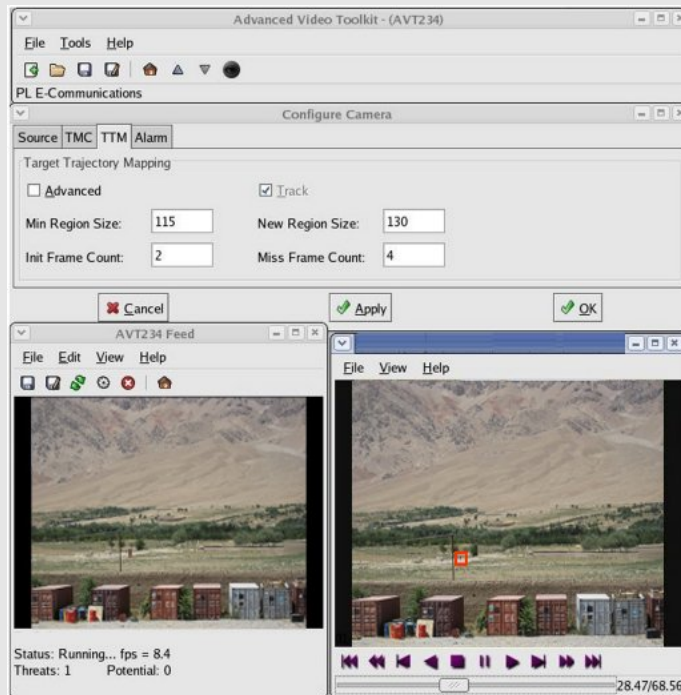
AVT234<sup>©</sup> TMC<sup>©</sup> kit products are easily and rapidly deployable, allowing for unattended protection and early warning of intrusion for small teams in the lead.

24/7 surveillance in urban areas, supply routes, and police stations.

Experience TMC's<sup>®</sup> **X**treme False Alarm Reduction

# Specifications for the AVT-KIT-001

<b>Sensor Interoperability</b>	<b>Any video or IR camera with NTSC video feed</b>
<b>Situational Awareness</b>	<b>AVT234© AVT-KIT-001</b>
<b>Operating System</b>	<b>Open Source: works with Linux, Unix, Windows</b>
<b>E-mail Servers</b>	<b>SMTP / POP3 other delivery services available</b>
<b>Sensor Frequency Band</b>	<b>802.11 b/g, 4 watt RF radio (optional)</b>
<b>Remote Control</b>	<b>Health Status, Tamper Alert, Analytic Sensitivity Control</b>
<b>Power Source</b>	<b>Vehicle Battery w/ converter, Generator, Solar (where feasible)</b>
<b>Network Interoperability</b>	<b>802.11, VHF Coupler, MBITRs</b>



**P&L E-Communications, LLC**

1900 Ridge Road E., West Entrance | Rochester, NY 14622

[www.plegov.com](http://www.plegov.com) [support@plegov.com](mailto:support@plegov.com) 1-585-340-5435